



**MONTANA  
DECOY CO**

# **Big Game Decoy Guide**

**2016 DECOY SETUPS**



# Milo Mule Deer

## THE SITUATION

The key to hunting mule deer is being able to cover a lot of ground, especially with your eyes. In other words, be prepared to do a lot of glassing. From several hundred yards, you and your hunting buddy are able to spot a nice buck bedded about 30 yards into a milo field. You can tell by his large rack slowly swaying above the stalks that he is undoubtedly worth going after.

## SET UP

Your trek to get within bow range is going to be about 70 yards through knee-high sage in order to reach the edge of the milo. If the buck is bedded at 12 o'clock, have your buddy head directly to 11 o'clock with **Miss Muley** and you take a beeline to one o'clock; vice versa if you're left handed. Using this technique, you can take advantage of the buck's poor vision. He will be so focused on the decoy that he'll never know you're drawing a bead on his vitals.

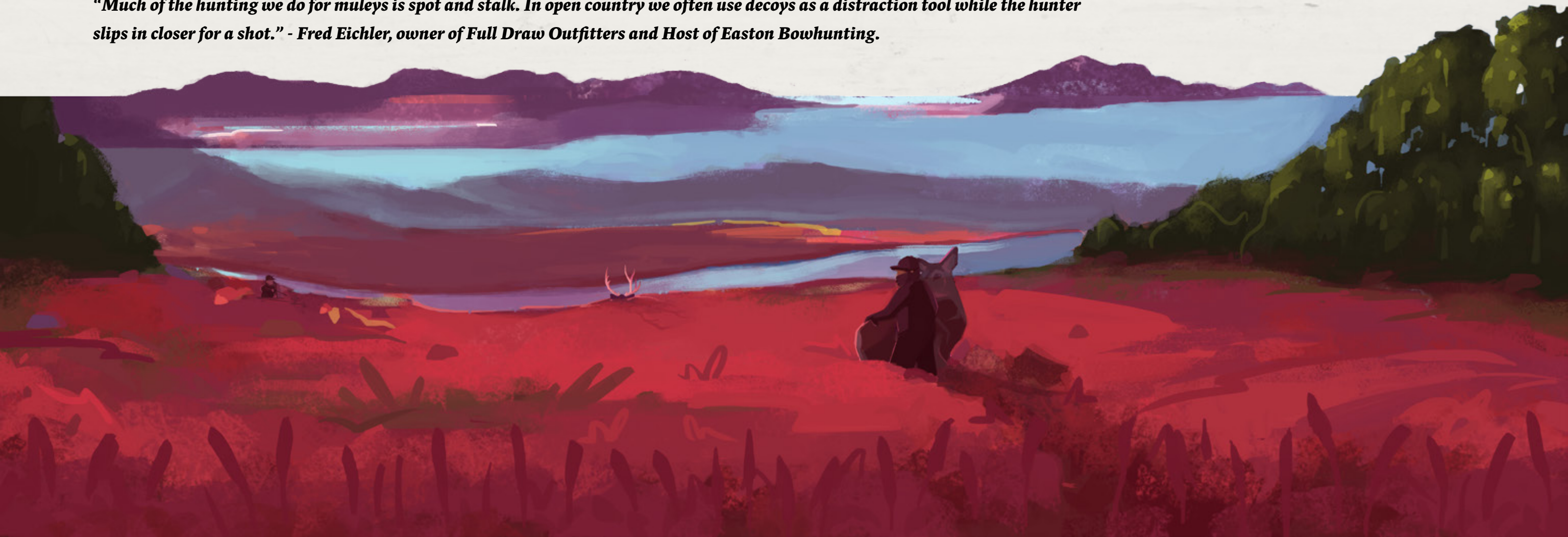
## HUNTING TIPS

A mule deer's huge ears allow them to pick up sounds that other big-game species would typically miss. Barring a few feet of snow on the ground, don't be afraid to stalk into bow range in socks or barefeet. Always wear extremely quiet clothing and never talk above a whisper. In fact, if you and your buddy have spent enough time hunting together, you can probably devise a plan without uttering a word.

## SPOTLIGHT

Montana Decoy has created **Miss Muley** decoy to get the attention of rutting mule deer bucks or distract the ones you have to put the sneak on. And its 40- by 38-inch frame allows hunters to do just that out in the open country where big mulies tend to hang out. Like every decoy from the company, the photo-realistic body pops open in the blink of an eye and folds down tight to the size of a dinner plate.

***“Much of the hunting we do for muleys is spot and stalk. In open country we often use decoys as a distraction tool while the hunter slips in closer for a shot.” - Fred Eichler, owner of Full Draw Outfitters and Host of Easton Bowhunting.***



# Open Range

## THE SITUATION

The wide-open terrain found in some elk country is a blessing and a curse. You can spot elk easily, but getting close enough for a shot is tough, especially when a bull elk stays close to his harem during the early season. There are a lot of eyes to fool. An elk decoy can help shield your movements as you stalk amidst a bull and his harem. It will also give the impression that a rogue cow is available to join the harem.

## SET UP

In the morning, get to a vantage point and start scanning a badland tract for herds of pre rut elk. Once you spot a viable target, plan the stalk using any available terrain features to your advantage. Open **Eichler Elk** and assemble the decoy stakes. Start making your way toward the herd with the decoy in front of you. When you get within earshot of the bull and his group of cows, stake the decoy into the ground or hang it from a tree limb. If hunting with a buddy, have him or her man the decoy. While you slip ahead 20 yards to hide in any cover you can find. Once in a shooting position, start calling and wait for the bull to come corral what he thinks is another lady into his harem.

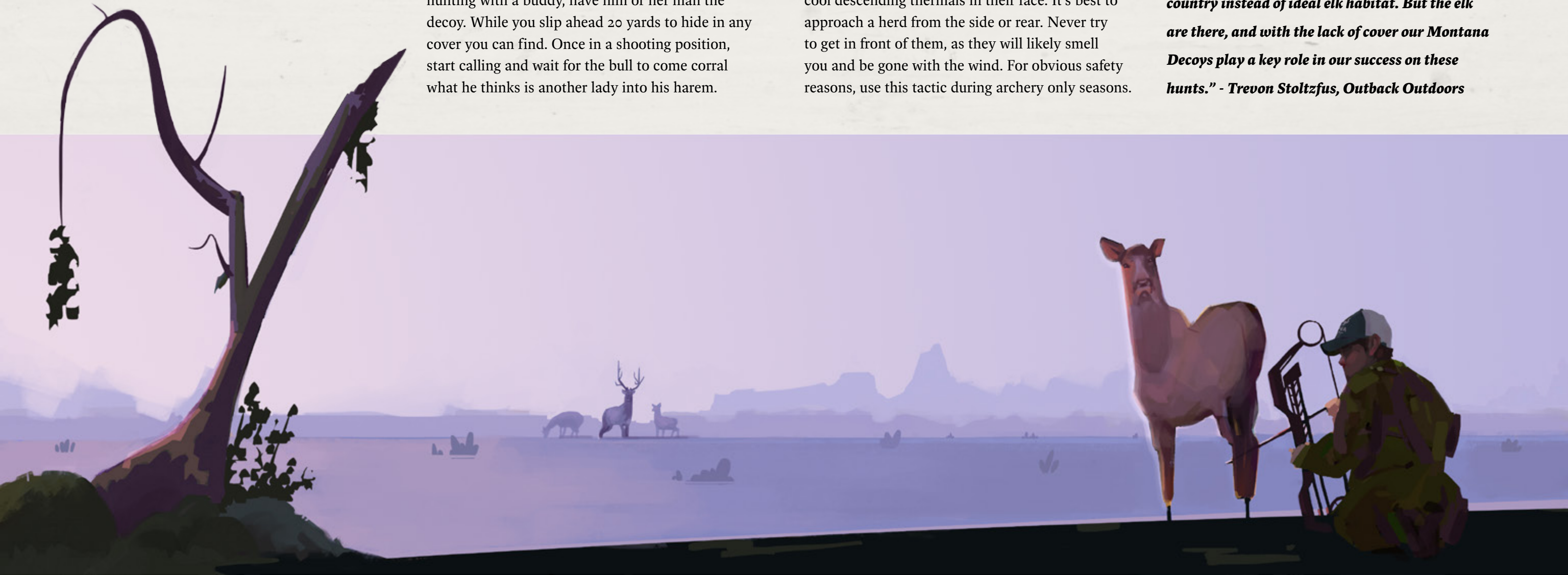
## HUNTING TIPS

Don't be afraid to move quickly. When bulls are focused on cows, you may find better success moving aggressively with a decoy in short bursts versus walking on eggshells. Use a "lost mew" call to get the bull's attention. If he needs further convincing, a bull grunt can give the perception that there is competition in the area. Elk may move several miles each morning during the rut. They prefer moving in an uphill direction with the cool descending thermals in their face. It's best to approach a herd from the side or rear. Never try to get in front of them, as they will likely smell you and be gone with the wind. For obvious safety reasons, use this tactic during archery only seasons.

## SPOTLIGHT

**Eichler Elk** sets up fast in any terrain thanks to both a string-and-clip hanging system and a stakes. Measuring 47" x 30", the decoy makes for an excellent shield when covering open ground. The head-on pose gives the bull a realistic view as you close the distance in a hurry.

***"Some big bulls live in areas that are shunned by other hunters because it looks like typical antelope country instead of ideal elk habitat. But the elk are there, and with the lack of cover our Montana Decoys play a key role in our success on these hunts." - Trevon Stoltzfus, Outback Outdoors***



# Desert Duel

## THE SITUATION

There's no doubt antelope decoys will draw in a buck like metal to a magnet during the peak of the rut. But that is not only the best time to use a decoy. As early as mid-August in some areas, antelope bucks will separate themselves from the herd and stake claims on their territory – much like a whitetail buck does during the pre rut. They won't tolerate any gatecrashers in the area they plan to keep their does once breeding starts. This tactic gives you another option if sitting over a waterhole is not paying dividends or is simply not your idea of fun. When waterhole hunting is at its worst, spot-and-stalking territorial pronghorns can be at its best.

## SET UP

You've spotted a shooter buck and have stalked to within 200 yards of him. After nocking an arrow, take out the easily expandable **Eichler Antelope Decoy** and flash it. This movement ensures that you'll catch the buck's attention and give him the impression that the intruder is making a scrape - paw the ground and create some dust until you give the impersonator a desired effect. If the buck believes another buck is making a scrape in his territory, trying to lure his does away, watch out and get ready to shoot. Keep tabs on the buck's approach through the decoy's mesh window. Draw your bow before either rising or leaning out the side to shoot.

## HUNTING TIPS

Glass in areas where active scrapes are present. This is a sure sign that a buck is marking his territory with the intent to keep interlopers out. Once the buck commits to coming in, stake the decoy into the ground and quickly get ready to release an arrow. More times than not, the buck will try to circle downwind of the decoy, so wait for the best shot angle.

***“I find an antelope buck decoy works best during the latter part of archery season in most areas. This is when dominant bucks are starting to run off lesser bucks and they are thinking about the rut. Try one. You'll have them charging right into the decoy.” - Fred Eichler, owner of Full Draw Outfitters and Host of Easton Bowhunting.***

## SPOTLIGHT

**Eichler Antelope** folds down to a compact size, making it the most transportable full size decoy on the market. It opens quickly when called to action. Weight should be packed out, not in, and with this decoy's stalking features, your odds of success have never been greater.



# Call to Brawl

## THE SITUATION

It's the stuff that has been filling movie screens and book pages for eternity: two males fighting over the same girl. During the rut, a bull moose will gladly accept a challenge and the opportunity to show he is superior. Pouring gas on a love-hungry bull's heart of fire is a super effective way to get him into shooting distance. And quite frankly it's the main allure of a moose hunt.

## SET UP

Pick a location around fresh moose sign that offers good visibility, and ideally, a higher vantage point of the surrounding landscape. Hills overlooking valleys, shorelines, wetlands and meadows are prime areas. For the best chance of a broadside shot opportunity, hang the **Moose Rack** in the open and find some cover to call and shoot from. Your calls will indicate the presence of a cow, while the Moose Rack decoy completes the breeding pair.

## HUNTING TIPS

If you have the luxury of hunting with a partner, have him hide behind the decoy and move it occasionally as the bull approaches. Begin with cow calls and if a bull responds, continue with cow calls. If a bull goes silent, switch to a bull call. Be patient, a moose rarely get in a hurry, but if daylight is fading, a bull call can tell him to "hurry up!" as he thinks he has competition for the cow

## SPOTLIGHT

Moose live in remote country. Built using in-the-field input from Ralph and Vicki Cianciarulo, the Archer's Choice **Moose Rack** embodies the spirit of Montana Decoys lightweight, super realistic and easily portable decoys. Weighing only 1 lb. 4 oz. and folding to 9" x 10" for easy transport, you can say goodbye to carrying a heavy shed antler or canoe paddle in the backcountry.

***"Our Moose Rack decoy will change your moose hunting forever! Be prepared for close encounters like never before!"***

***– Ralph and Vicki Cianciarulo, Archer's Choice***



# Rise and Shine

## THE SITUATION

Bedded bull elk can be some of the hardest to kill. Older bulls know how to pick the best vantage point so that they can see anything approaching. Plus, if a bull is bedded, one of two things are likely happening: Either it's the pre rut and he's still hanging with a few other bulls. Or, he's already collected a harem and there will be several cows milling around. Either way, without a well thought out plan, you'll never get close enough for a shot with your bow. In this situation, you've spotted this herd bull and his cows in an aspen grove backed up against a rock wall just at sunset.

## SET UP

Whether you're camping or going back to a lodge each night, be in the woods ready to move hours before sun up. Elk rise early. Since he's surrounded by cows and a thick shelter of aspen trees, set up the decoy and let him come to you. Long before daylight, get to a place about 150 yards from the bull where you know he'll see the **RMEF Cow Elk** decoy. Stake it into the ground and ease ever so quietly another 30 or 40 yards toward the bull where you can set up for a shot. The key is to draw him past you.

## HUNTING TIPS

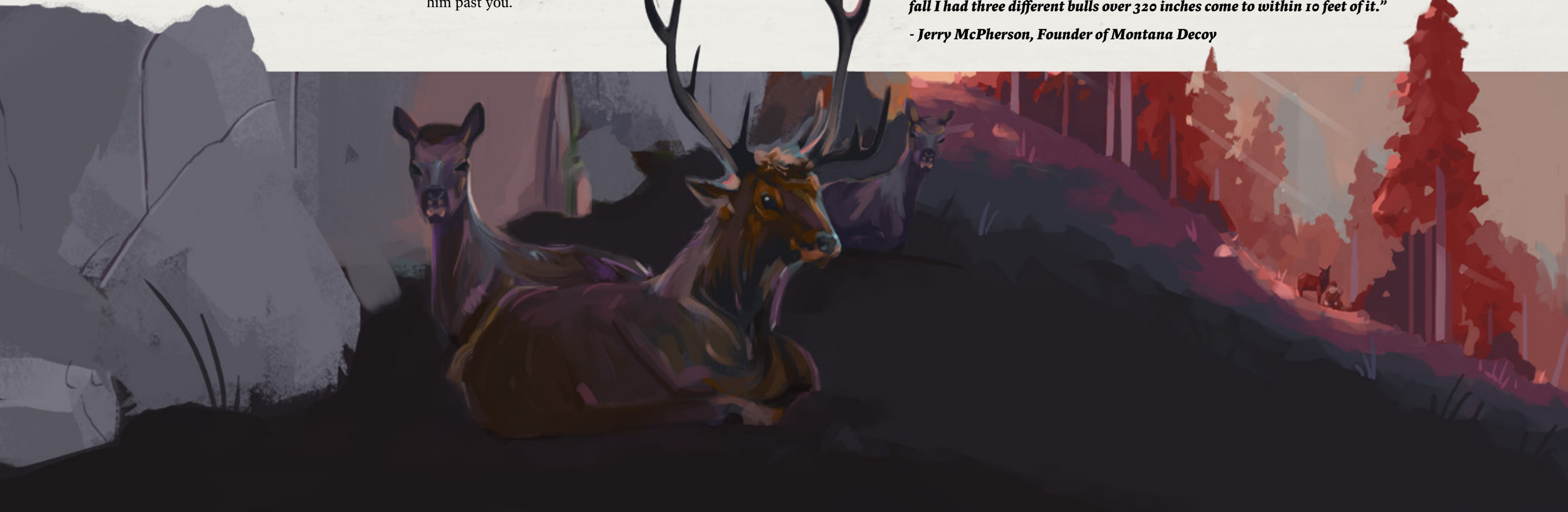
It's common knowledge that you always hunt into the wind though the sight of a massive 6x6 causes us to occasionally make irrational choices. If the bull is bedded against a sheer rock wall, which means you can't approach from above, this leaves you with three options. The one you choose is dependent upon the wind. Go early. Go quietly. Go into the wind.

## SPOTLIGHT

Use **RMEF Cow Elk's** large stature to help you approach unnoticed in the event that you arrive too late or if the herd moves the opposite way of your set up. Weighing only 2lbs. 100zs., this photo-realistic decoy opens up to create a 48- by 50-inch portable hunting blind that is ideal for the forest, scrub brush or open country of the West. Big bulls can't resist the tempting look of the RMEF Cow Elk decoy and she can be used through all phases of the season.

***“The RMEF Cow Elk is the most realistic elk decoy we have ever built. Last fall I had three different bulls over 320 inches come to within 10 feet of it.”***

***- Jerry McPherson, Founder of Montana Decoy***



# Shadow Stalking

## THE SITUATION

Bull elk are weary animals. They don't become dominant herd bulls from making bad decisions. Now, imagine you're only chance to hunt is on a piece of public ground that you know gets a ton of pressure throughout the season. You're going to have to put in extra time and effort to have a chance on an elk, but your success rate is going to exceed your fellow fair-weather hunters if you just stay persistent, quiet and in the shadows.

## SET UP

You've used the darkening shadows in the late-evening light to get around in front of the herd as they head to their beds for the night. Place the **Elk Rump** at the edge of a clearing where the bull will see it. He'll likely think one of his cows is trying to stray away from the herd and do his best to bring her back. Once he turns and starts ambling your way, clip your release and try not to pass out.

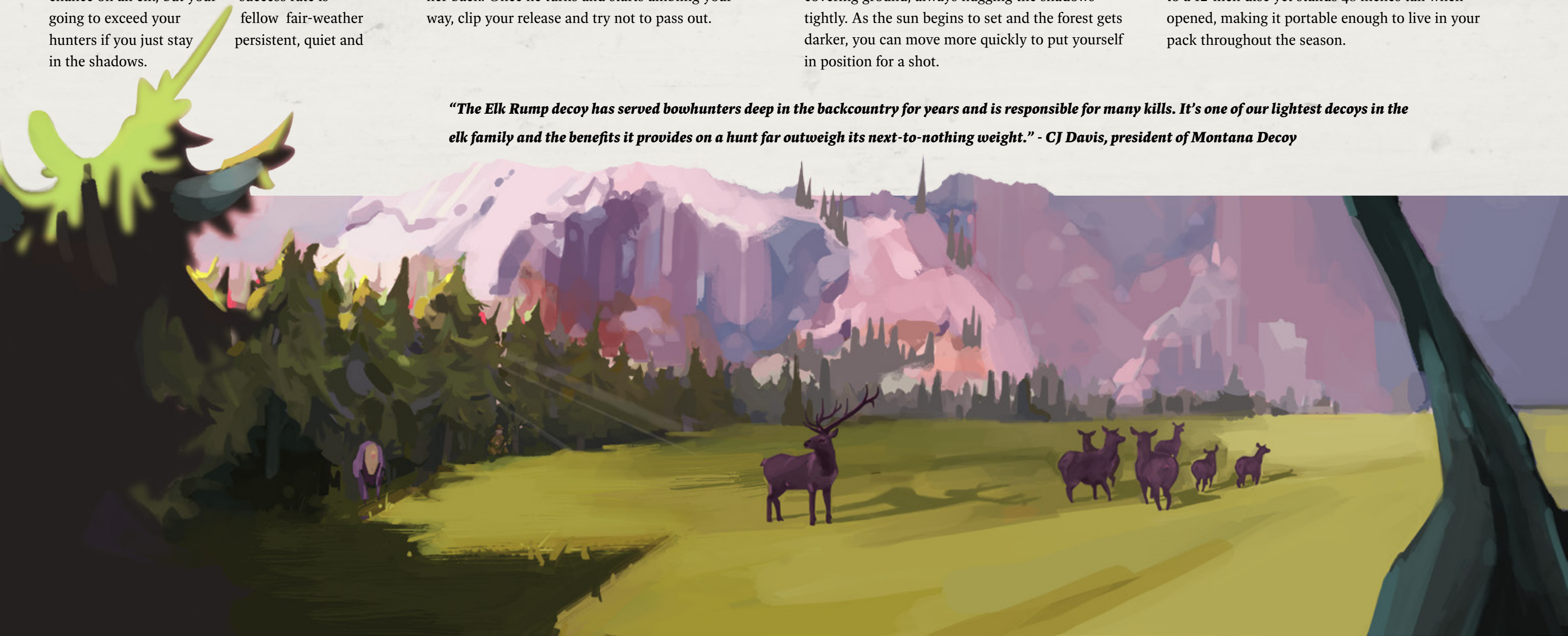
## HUNTING TIPS

Only use a cow call until you locate a bull, then put it away. Constant calling will only alert the bull, or an entire herd, of your presence and give away your location. Use the daylight hours to simply listen for further sounds from the herd to detect which way they are moving. Slowly, start covering ground, always hugging the shadows tightly. As the sun begins to set and the forest gets darker, you can move more quickly to put yourself in position for a shot.

## SPOTLIGHT

The **Elk Rump** is the lightest elk decoy in Montana's line, and one of the most versatile on the elk-decoy market. With a lightweight, durable and easy-to-set-up design, Elk Rump is what bowhunters need to call in and kill big bulls while bowhunting in demanding terrain. It folds down to a 12-inch disc yet stands 48 inches tall when opened, making it portable enough to live in your pack throughout the season.

*"The Elk Rump decoy has served bowhunters deep in the backcountry for years and is responsible for many kills. It's one of our lightest decoys in the elk family and the benefits it provides on a hunt far outweigh its next-to-nothing weight." - CJ Davis, president of Montana Decoy*





**RMEF COW ELK**

Montana Decoy has partnered with the Rocky Mountain Elk Foundation to develop the RMEF Cow Elk. It has all the features to give you the ultimate advantage for stalking, setting up or preparing to shoot. The decoy stands tall for increased visibility in scrub brush or on the open plains. It also offers cover when there isn't any around and is a great tool for stalking.

WEIGHT	42 oz. (INCLUDING POLES)
FOLDED	17" x15"
UNFOLDED	48" x 50"

**\$109.99**

**BUY**



**EICHLER ELK**

Fred Eichler nailed it! This elk decoy – designed by Fred Eichler – is the most portable full-bodied elk decoy you can carry in your pack. Not content to get by on looks alone, the Eichler Elk decoy sets up quickly in any terrain using poles or the string-and-clip hanging system.

WEIGHT	40 oz. (INCLUDING POLES)
FOLDED	19" x12"
UNFOLDED	47" x 30"

**\$109.99**

**BUY**



**ELK RUMP**

Talk softly and carry a light decoy and you will go far. Teddy Roosevelt once said something like that. We bet if he was around today, he would be packing the Elk Rump decoy on all his backcountry hunts. With a lightweight, durable and easy to set up design, the Elk Rump is what bowhunters need to call in, draw, and make a shot on a big bull in demanding terrain.

WEIGHT	34 oz. (INCLUDING POLES)
FOLDED	12" x12"
UNFOLDED	48"

**\$99.99**

**BUY**

**GET 15% OFF ALL DECOYS WITH CODE: 2016BIGGAMEGUIDE**

Visit [montanadecoy.com](http://montanadecoy.com) for more tips.





**EICHLER ANTELOPE W/QUICKSTAND**

Outfitter and writer Fred Eichler worked hand-in-hand with us to design his signature antelope decoy: the Eichler Antelope. Included with a Quickstand platform, a see-through mesh viewing window and stalking handle. The Quickstand allows you to stake decoys into the ground with one foot, while the cable toe-loop makes removing the decoy from the ground virtually effortless.

WEIGHT	48.5 oz. (WITH STAND)
FOLDED	18" x10"
UNFOLDED	39" x 37"

**\$129.99**

**BUY**



**MISS MULEY**

The secret of many successful mule deer hunters is using a decoy to stalk bucks or lure them into bow range. For that reason, Montana Decoy has created a one designed for the avid mule deer hunter. In stalking situations, the life-size body of this decoy gives you cover when there isn't much. Its realistic pose will grab the attention of rutting mule deer bucks and offer a distraction as you take a shot.

WEIGHT	30 oz. (INCLUDING POLES)
FOLDED	14" x15"
UNFOLDED	40" x 38"

**\$89.99**

**BUY**



**MOOSE RACK**

Montana Decoy has partnered with the Ralph And Vicki Cianciarulo of Archer's Choice to develop the most packable and effective moose rack decoy ever. Gone are the days of having to tote large moose decoys into the backcountry as the Moose Rack folds down to the size of a saucer plate and sets up in seconds.

WEIGHT	20 oz. (INCLUDING POLES)
FOLDED	9" x10"
UNFOLDED	53" x 33"

**\$89.99**

**BUY**

**GET 15% OFF ALL DECOYS WITH CODE: 2016BIGGAMEGUIDE**

Visit [montanadecoy.com](http://montanadecoy.com) for more tips.





**MONTANA  
DECOY CO**

# **Big Game Decoy Guide**

**MONTANADECOY.COM**

*Follow us on **Facebook**, **Twitter**, **Instagram** and **YouTube** for the latest news.*